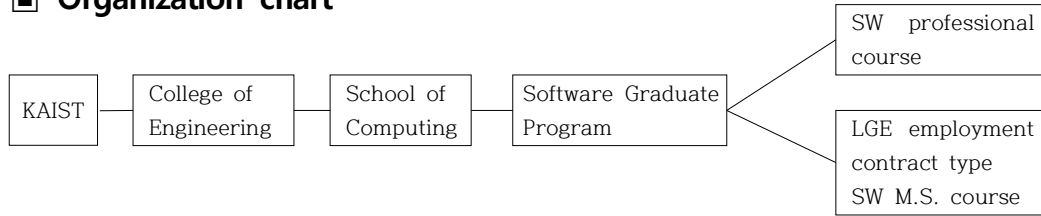


■ **Organization chart**



■ **Introduction to M.S. course**

- Software Graduate Program offers three Master’s Degree in Science as following
- Number of alumni/current students in the table is based on Mar. 2018

Course Title	Details	Established (year)	No. of alumni	Current no. of students
SW professional course	This is a two-year master’s degree program for employees over two years experience dispatched by a company. After a year of graduate program, the student returns to work and proceeds the graduate project. The company supports the student’s full education expenses. Students who wish to enroll in this course personally can do so since 2011. (students who personally enroll in this course as part-time must graduate in 3 years maximum)	2003	277	26
Employment contract type SW M.S. course	NIPA(National IT Industry Promotion Agency) sponsored industry-academy relation human resource development project by ministry of strategy and finance. The admission process includes an interview between the company and applicants of master’s course to confirm employment after the course. There is mandatory employment at the completion of 2-year master’s degree. The mandatory employment term is three years for students enrolled in 2012, and two and a half years for students enrolled in 2013 and after. NIPA supports full education expenses. Participating companies pay a certain amount of corporate contribution.	2008	20	0
LGE employment contract type SW M.S. course	The admission process includes an interview between LG Electronics and applicants of master’s course to confirm the employment. There is mandatory employment at LG Electronics for four years after two years of master’s degree program. LG Electronics supports full education expenses.	2012	16	6
Total			313	32